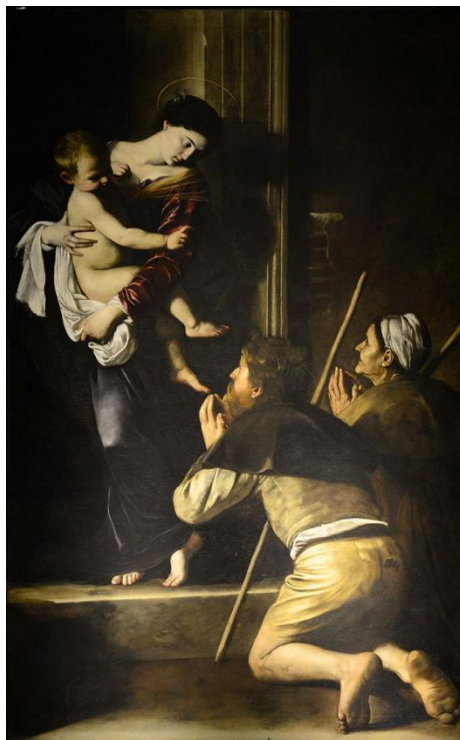




Pilgrimage, Shrines and Healing in Late Medieval and Early Modern Europe



A one-day symposium at the University of Chester

24 June 2016

Programme

09:00 Welcome & Coffee

09:15 Plenary I

Anthony Bale (Birkbeck): Pilgrimage and Collective Memory: The Flowery Field near Jerusalem

Chair: Dale Copley (Chester)

10:15 Panel 1: Pilgrims, Shrines and Materiality

Chair: Ruth Nugent (Chester)

Diane Heath (Canterbury Christ Church): Tokens of Affection? Pilgrim Tokens Sewn into a fifteenth-century French *Horae*

Sam Johnson (Birmingham City): “He Who Would Valiant Be”: Exploring Pilgrimage and Hospitality in Early Modern Florence

Michael Tavinor (Hereford Cathedral): Shrines of the Saints: Annihilation at the Reformation?

11:30 Coffee

11:45 Panel 2: Pilgrimage and Healing in Early Modern Europe

Chair: Clare Hickman (Chester)

Annie Thwaite (Cambridge): Pilgrimage and Healing in Early Modern England

Kathryn Hurlock (MMU): ‘St Silin will cast a spell for you’: Local Pilgrimage and Healing in fifteenth and sixteenth-century North Wales and the March

Jenny Hillman (Chester): Healing Body and Soul: Spiritual Journeys in seventeenth-century France

13:00 Lunch

13:45 Panel 3: Devotion to the Saints: Pilgrimage and Gender

Chair: David Harry (Chester)

Ella Kilgallon (QMUL): The Pilgrimages of Angela of Foligno: The Road to Assisi

Einat Klafter (Geneva): Man as the Goal of Pilgrimage in the Book of Margery Kempe

Rose-Marie Peake (Helsinki): The Patroness of Paris and Moral Management: Saint Geneviève and the ideal semi-religious woman in seventeenth-century France

15:00 Tea

15:15 Panel 4: Spiritual Pilgrimage, Devotional Experiences & Agency

Chair: Patricia Murrieta-Flores (Chester)

Cynthia Neville (Dalhousie): Penitence, Reconciliation and Remission: The King’s Pardon in Thirteenth-Century Scotland

Matthew Coneys (Warwick): ‘Pensa bene, anima intellectiva’: Devotional Approaches to the *Book of John Mandeville* in fifteenth-century Italy

Alison Stedman (North Carolina): Pilgrimage and Individual Agency in seventeenth-century France

16:30 Plenary II

Elizabeth Tingle (DMU): Long-Distance Pilgrimage and the Counter-Reformation in France: Sacred Journeys to the Mont Saint-Michel 1520 to 1750.

Chair: Jenny Hillman (Chester)

17:30 Discussion & Future Directions

18:00 Close

19:00 Dinner